

YOU DREAM



WE DELIVER

AZA Top Honors Award



AZA Top Honors Award



AZA Top Honors Award



AZA Significant Achievement Award



COST has been a full-service zoological exhibit contractor for over six decades, and a member of AZA since 1971. Over the years, we have pioneered many tremendous improvements in developing naturalistic exhibits.

Our longevity in the exhibit fabrication industry has enabled us to meet unique challenges common in customized, one-of-a-kind projects. COST's highly qualified artisans and construction personnel work diligently to create aesthetically pleasing, realistic, cost-effective, and animal-safe exhibits. Our immersive environments are developed to engage zoo, aquarium, and museum patrons and better help them understand the amazing world in which we live.



COST's artisans have extensive backgrounds in recreating any type of naturalistic environment. Whether your project calls for simulated rock work, waterfalls, streams, earthen textures, trees, vines, coral reefs, glaciers, snow, ice, theme ruins, replicated structures, and sculptures of any kind, COST has the experience and artistry to deliver your project in a timely and cost effective manner.



AZA Significant Achievement Award

ZOO EXHIBIT FABRICATION



AZA Significant Achievement Award



photo by WCS; AZA Significant Achievement Award



AZA Top Honors Award

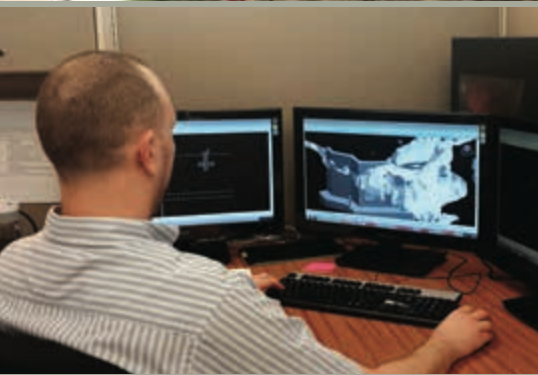


FROM CONSULTATION TO COMPLETION...



CONSULTATION & MODELS

COST staff members can function as exhibit fabrication consultants. We can advise on material usage and constructability for simulated rock, mud banks, waterfalls, theme facades, artificial trees, and coral. During the pre-construction phase for most of our projects, we build a highly detailed three-dimensional model to use for review and approval prior to beginning the fabrication and construction phases.



SHOP DRAWINGS

Our designers develop shop drawings using the latest in AutoCAD, Revit, and other software to fully integrate details with the design work produced by zoo exhibit designers, landscape architects, architects, contractors, owners, and other consultants. Our Computer Aided Framework System (CAFS) enables us to use 3D scanning and create output directly to our automated equipment for fabricating theme elements with incredible detail. This data can be shared with the design and architectural team for Building Information Modeling (BIM) integration and clash detection. We can also recommend "green" methodologies for our projects.



FABRICATION

Unlike many specialty construction firms, COST has the capacity to prefabricate critical exhibit components within our 144,000 sq. ft. plant. We utilize shotcrete, GFRC, FRP, epoxies, urethanes, acrylic, and other materials to replicate the natural environments we build. The fabrication plant also includes three steel shops for erecting steel armatures, which expedites projects and saves money when timelines are constrained. Small jewel boxes and larger prefabricated aquarium tanks can be manufactured completely within our plant and shipped to the facility for immediate installation. COST also offers the largest library of molded natural elements and other artifacts.



CONSTRUCTION

Exhibit construction requires experienced personnel to complete projects on time and within budget. Our artisans, skilled in replicating Mother Nature's grandeur, bring to life the ideas developed through design and modeling. We promote a safe work environment and employ a full-time safety engineer to ensure compliance with OSHA requirements and COST's Safety 365 Program. As an industry-leading exhibit fabrication firm, our experience ensures clients a smooth transition from consultation to completion.

Jackson, WI
Corporate Headquarters
4201 Highway P
Jackson, WI 53037
262-677-6060

Los Angeles, CA
610 S. Jefferson Street
Unit H
Placentia, CA 92870
714-332-3317

Orlando, FL
6457 Hazeltine National Drive
Suite 155
Orlando, FL 32822
407-816-2110

Seattle, WA
3400 Harbor Avenue SW
Suite 242
Seattle, WA 98126
206-223-5777

Winnipeg, MB
201 Portage Avenue
Suite 1869
Winnipeg R3B3K6 Canada
204-926-8538



www.cost-inc.com

info@cost-inc.com